

# CRYSTAL PALACE

## OVERGROUND FESTIVAL

MORCHEEBA

FREE

17 JUNE 2017

★ BRAND NEW LOCATION ★  
CRYSTAL PALACE PARK

FAMILY ZONE

COMMUNITY

FOOD

SPOKEN WORD!

VINTAGE UP THE PALACE

WELL BEING

YOUTH TAKE-OVER STAGE!

ACTIVE

DESIGN BY PAINTSHOP STUDIO

MORE FESTIVAL EVENTS  
**12-18 JUNE**  
[CRYSTALPALACEFESTIVAL.ORG](http://CRYSTALPALACEFESTIVAL.ORG)

SUPPORTED BY

Funding raised by  
**The National Lottery**  
and awarded by the Heritage Lottery Fund



Supported using public funding by  
**ARTS COUNCIL ENGLAND**

# PROGRAMME OF EVENTS

Please note that all events are free unless otherwise stated. 90% of festival events are free for all to attend!

## IMPORTANT NOTICE – PLEASE ENSURE YOU READ!

The United Nations Board of Significant Inspiration (UNBOSI) is one of the lesser-known departments of the United Nations. Founded in 1947 with the knowledge that even after a war to end all wars, world leaders had failed to keep the peace and tend to be conservative uninspired negative thinkers. We have been globally studying sites associated with human genius, using the power of the planet to create 'light bulb' moments inspiring co-operation and friendship between all nations.

Since January 2017 we've been working closely with the Norwood Society and the Museum of Croydon to investigate the highly inspiring area of Crystal Palace. UNBOSI's scientific research has led us to discover high levels of MUSE (Micro-molecular Unseen Sensory Emanations) in the area that is the key source of creative genius. We're now ready to share our learning over the past few months with the public and become the next bright sparks. **See pages 20 and 31 for further details of the key places for ooze of Muse!!**



## GUIDED TOURS OF ST. JOHN THE EVANGELIST CHURCH

Guided tours of this Grade II\* listed church will introduce some of the characters involved in the history of this jewel in Crystal Palace's architectural heritage. Please see our website [www.sjun.org.uk](http://www.sjun.org.uk) for dates and times and to book a place, email [sjunoffice@gmail.com](mailto:sjunoffice@gmail.com)

## BARNARDOS STAY AND PLAY SESSIONS



Discounted entry fee of £3.50 to Barnardo's Triangle afternoon stay and play sessions 12 – 16 June. Afternoon sessions run from 13:30 to 16:00 each weekday, except Tuesday. First come, first served.

## LONDON MOZART PLAYERS IN THE COMMUNITY

Funded by the Arts Council, the fantastic London Mozart Players, now resident at St John the Evangelist Church, will be out and about in the community performing concerts in local schools and care homes to bring the festival to children and older people. We want everyone to enjoy the festival so this project is designed to bring it to those who might not necessarily find it by themselves [www.lmp.org](http://www.lmp.org)



is a stage, and a forum, a meeting place and a springboard for ideas. It's a playground, and a ritual site.



is a place making and building extravaganza where music, dance and architecture come together as a mean of expression for a community that wants to imagine a different future that will be shaped collectively. For date and times during festival week, check the website [buildyourworlds.com](http://buildyourworlds.com)

## PLAQUES AROUND THE TRIANGLE

The Norwood Society has been researching the history of shops in the Upper Norwood Triangle. During the festival, participating shops will display plaques in their window showing a past trade or trader. An accompanying guide to the plaques will also be available during the festival. Please visit the Norwood Society's stall in Crystal Palace Park on Saturday 17 June to see our display and collect a guide.



## 19:00 CONNECTED YOGA CLASS

**Crystal Palace Park** – at the bottom of the main steps to the left of the Sports Centre  
Open to all levels – beginners welcome, this nurturing and uplifting class allows you to go within and slow down the pace, whilst building strength and flexibility. Building a positive mind and happy, healthy body all in the beauty of nature, and having fun whilst doing it – class lasts one hour. No charge but registration essential at <https://goteamup.com/p/615597-emma-deery-zumba-yoga/>

## 20:00 QUIZ

### The White Hart

Crystal Palace's favourite weekly Monday night quiz. Cash rollover, play your cards right and the famous £50 bar tab

## 20:30 DULWICH SET DANCERS

### Gipsy Hill Tavern

A display to include dances from Galway, Kerry and Clare

## 10:30 – 14:30 MEN IN SHEDS PENGE OPEN DAY

### Kingsdale House, Kingsdale Road, SE20 7PR

Drop in to meet the Penge Sheddors, buy or commission an item, or join one of our workshops to make something for your garden e.g. bird box, bug house. There will be a small charge for items you make and take away. **Facebook:** [meninshedspenge](#), contact **Jon Paul Mountford** 020 8294 3011 / 3017



An Age UK Bromley & Greenwich project

## 19:30 BEYOND WORDS

### Gipsy Hill Tavern

Maurice Riordan and local poets Paul Carney, Racheal Joseph, Orlanda Marsden, Robin Pilcher, William Wylde; storyteller Lindy Armah; playwrights Claire Booker and Frank Mariani; and Salt Music, a fusion of poetry, music and theatre by Angela Brodie and Steve Halliwell. See it before it goes to Hull City of Culture. Entry £5 / £4 concs on the door

# looking for something different?



Sales

Lettings

Management

[www.davisandco.co.uk](http://www.davisandco.co.uk)  
Tel: 020 8766 0088  
E-mail: [info@davisandco.co.uk](mailto:info@davisandco.co.uk)

# Davis & Co

## 10:30 – 12:30 QIGONG

St Hugh's Community Centre, 42 Castledine Road, SE20 8PL

Stroll along to our FREE well-being event. One hour of Qigong followed by healthy refreshments. Qigong is an ancient Chinese health care system that integrates physical postures, breathing techniques and focused intention. We look forward to chill-laxing with you. Drop in no need to book.

## 12:00 – 16:00 MUSIC MANIA

The Lakes Café

Come to our oasis next to South Norwood Lake and enjoy music-making for all ages and performances from top local musicians  
[www.thelakescafe.co.uk](http://www.thelakescafe.co.uk)

## 12:45 – 13:30 DRUMMING CIRCLE

Kingswood Community Shop, 37-38 Seeley Drive, SE21 8QR

A drumming circle is a fun and social activity that brings people together to be spontaneous in the moment. Drums provided – no experience necessary but limited spaces available.

## 20:00 FASCINATING RHYTHM

Gipsy Hill Tavern

A fifteen piece swing band who play a mix of jazz, blues and Latin.

## 19:45 – 21:00 CHAKRADANCE TASTER SESSION

St Hugh's Community Centre, 42 Castledine Rd, SE20 8PL

Sandalphon's Slippers take you on magical inner journeys using gentle multi-sensory healing methods including Chakradance™, mandala art and sound healing. Numbers are limited. To reserve your place please book via Eventbrite at [www.eventbrite.com/e/free-chakradance-taster-session-tickets-33524675206](http://www.eventbrite.com/e/free-chakradance-taster-session-tickets-33524675206)

## 20:00 COMEDY

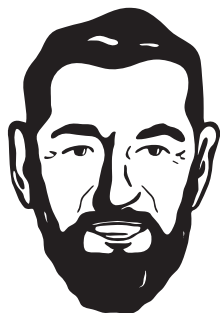
The White Hart

Four live acts, compared by legendary host Tim Ballantine.

## 19:30 LIVE MUSIC – VEDA BLACK

Domali Bar & Kitchen

A two piece – vocals, guitar and cajon playing alternative soul.



**BOB  
WINES**

Bring Our Bottles

# 10% off

Present this ad in either of our shops to get 10% off your purchase. £10 minimum spend required and limited to one purchase per person. Valid during the festival only.

@BringOurBottle



## 17:00 – 17:45 MINDFULNESS CLASS FOR CHILDREN

Lihn Son Buddhist Temple, 76 Beulah Hill,  
SE19 3EW

Pop along to our lovely session teaching children the art of mindfulness meditation. Come and learn techniques that are proven to increase concentration and calm the mind. Classes are completely free and all are welcome. Ages 5 – 15. No need to book, just drop in – all are welcome  
[seththbutcher@hotmail.com](mailto:seththbutcher@hotmail.com)

## 17:00 – 19:20 SPORTS IN THE PARK

Westow Park

Back by popular demand Friends of Westow Park's annual children's sports extravaganza. Get your trainers on for races, football, tennis and more. Local sports clubs will be attending to introduce you to new sporting opportunities for your child. Ages from toddler to 15 years. Prizes for winners!

## 17:30 – 18:39 BIG TODDLER AND GAMES FOR UNDER 5'S



All activities are part of Westow Park sports day. Sponsorship forms for the Big Toddler can be collected Barnardo's Triangle from 5 May.

## 19:00 – 20:30 SOUNDBATH

Barnardos Triangle

Retreat, reflect and release those weekly niggles that impact our natural flow...a sound bath is a unique and uplifting group meditation that uses ancient instruments to help you relax. A lush treat with gongs, singing bowls and percussion. "We rarely hear the inside music but we are dancing to it nevertheless" Rumi. Tickets £10 from  
[www.soundbath.london](http://www.soundbath.london)

## 19:30 SHOPPING AT UPPER NORWOOD IN EDWARDIAN SPLENDOUR

Upper Norwood Library Hub

A local heritage talk by the Norwood Society. The development of the Triangle as a shopping centre in its heyday illustrated by Alun Thomas. Free but donations welcome.

## 19:30 THE ELECTRIC PALACE PRESENTS SIDWAYS

Coopers Yard

In association with Crystal Palace International Film Festival and Stanley's Film Club. Our boutique open air cinema at Coopers Yard returns with a showing of Alexander Payne's Sideways, a very funny but heart-felt look at middle life and love through the eyes of wine-obsessive Miles and his womanising friend Jack. Via their road trip through wine country Jack is looking for his "last taste of freedom"; Miles just wants to taste perfection in a bottle. Jack is fine with cheap Merlot; Miles pines for the elusive, perfect Pinot. Many thanks to Crystal Palace International Film Festival and to Stanley's Film Club for helping stage this event. Reserve your place with a donation of £10 with all funds going to support the festival. First come first served. Book place(s) by emailing [info@crystalpalacefestival.org](mailto:info@crystalpalacefestival.org)



## 20:00 FILM SHOWING

Gipsy Hill Taven

Check Facebook page for details.

## 21:00 TIL LATE, LIVE MUSIC

Westow House

A fun-fuelled evening of live music featuring exciting live bands and solo artists.

## 21:00 ACOUSTIC PALACE

The White Hart

The original and best acoustic night in South London – regular rockabilly, blues, folk, rock 'n' roll and open mic.

## 10:00 – 12:30 FAMILY IDEAS FAIR

**St John the Evangelist, Sylvan Road, SE19 2RX**

An event for families with babies and young children – with fun activities, food and groups from the South Norwood and Upper Norwood community.

## 10:30 – 16:30 DULWICH QUILTERS DROP IN DAY

**South London Scout Centre, Grange Lane, SE21 7LH**

Learn how to sew a patchwork block for a quilt we'll donate to charity. Just bring your enthusiasm – we have the sewing machines, fabric and expert tuition! Plus see a display of quilts made by members of Dulwich Quilters and learn more about this beautiful craft. Teas, coffees and cake available and parking nearby.

## 17:00 – 23:00

**The Sparrowhawk**

Start celebrating the festival weekend with 2 for 1 on glasses and bottles of prosecco til 20:00 followed by 2 for 1 on cocktails until 23:00

## 18:00 MEET THE BREWER

**The White Hart**

Come and meet one of our craft/ale suppliers, including Greenwich Meantime, Camden Town and Sambrook's. Prizes and free beer!!

## 19:30 OVERGROUND EXPRESS

**Antenna Studios**

We're back! .... with another blinding line-up of spoken word to kick off the festival weekend. Expect a wide range of voices. Expect a few surprises. Not for the faint-hearted. Tends to sell out. Confirmed feature slot: Zia Ahmed: Roundhouse Slam winning poet, 2017 resident writer at Paines Plough and recently awarded a place on the Channel 4 Playwrights' Scheme. Many more acts to be confirmed. Hosted by prize-winning local poet Joe Duggan. £8 / £5

[www.eventbrite.co.uk/e/overground-express-spoken-word-special-tickets-33324281824](http://www.eventbrite.co.uk/e/overground-express-spoken-word-special-tickets-33324281824)

## 20:00 – 02:00 THE ORB SOUND SYSTEM AND FRIENDS

**Anerley Town Hall**

Dr Alex Paterson has gathered friends including Nancy Noise and DJ Dadaist for a festival return to Anerley so get your dancing shoes on again! Scene of many a great night's wiggling out, don't miss this chance to dance yourself happy with amazing lights, a fantastic bar and the bard of Snorwood himself Dr Paterson. Tickets £15 / £10 conc. from Eventbrite [www.eventbrite.co.uk/e/the-orb-soundsystem-and-friends-tickets-33884347997](http://www.eventbrite.co.uk/e/the-orb-soundsystem-and-friends-tickets-33884347997)



## 21:00 THE GREMLINS

**Gipsy Hill Tavern**

Live music from the 70's, 80's, 90's and rock followed by DJ until late

## 21:00 TIL LATE

**Westow House**

A fun-fuelled evening of live music featuring exciting bands and solo artists.

## 19:00 COMEDY

**Brown & Green**

We are excited to announce our comedy night at B&G Triangle. £10 tickets including an ice cold beer or glass of fizz! Book quick! [brownandgreen@outlook.com](mailto:brownandgreen@outlook.com)

# SATURDAY 17 JUNE 2017 — TRIANGLE AND BEYOND DAYTIME EVENTS

## ALL WEEKEND CRYSTAL PALACE SUBWAY TOURS

Please see [www.cpsubway.org.uk](http://www.cpsubway.org.uk) for full information including access and times for these heritage tours.

## 10:00 – 15:00 CRYSTAL PALACE FOOD MARKET

Every Saturday – an organic farmers' market that supports ultra-local food producers, artists and musicians. A Transition Town project.  
[www.crystalpalacefoodmarket.com](http://www.crystalpalacefoodmarket.com)

## 10:00 – 16:00 METHODIST MARKET

### Upper Norwood Methodist Church

Stop off on your way to Crystal Palace Park and browse amongst a variety of stalls including jams, chutneys, plants and Bric-a-Brac. Refreshments available throughout the day.

## FESTIVAL CELLIST TRAIL WITH SEBASTIAN COMBERTI

10:30 Brown & Green

11:30 Outside Sainsbury's

12:30 Living Water Satisfies

13:30 Crystal Palace Park Gardens (beside the bus station)

There's nothing more relaxing and civilised than hearing the strains of a solo cello floating over the hushed conversation and delicious coffee aromas of a café environment. Never more so when the soloist is Principal Cellist of London Mozart Players, Sebastian Comberti, one of the UK's finest musicians who will give 20 minutes recitals at each location – follow the trail to start the weekend!

## 11:00 – 12:00 FREE FAMILY COFFEE CONCERT

### Crystal Palace Museum

The Museum and the internationally renowned London Mozart Players invite you to discover stories from the spectacular Crystal Palace, illustrated with music. Delicious coffee and biscuits generously donated by

DALHOUSE

## 11:00 – 14:00 GREAT GET TOGETHER GARDEN PARTY

Christ Church Gipsy Hill is hosting a garden party in honour of the late MP Jo Cox. Come along for tea and cake with your neighbours and take a look at our exhibition celebrating Christ Church's 150 years on Gipsy Hill.

## 11:00 – 16:00 CURATOR AND VOLUNTEER TALKS Crystal Palace Museum

Discover your free local museum, where the museum's founding Curator and expert volunteers will share their enthusiasm for the Victorian wonder that was the Crystal Palace with you.

## 12:00 – 20:00 DIGITAL SOUL

### The Royal Albert

Soulful house collective Digital Soul take over the Albert front garden on Westow Hill With Resident DJs Jimmy Read and Robbie Charles being joined by Paul Trouble Anderson and New York house pioneer Victor Simonelli. Music, food, dancing, laughter, love and life.

## 12:00 TIL LATE WESTOW HOUSE

Pitch up at our pop-up bar and enjoy a daily hog-roast, all in the vast Westow House gardens.

## 13:00 – 17:00 MAKING A MARK

### Upper Norwood Library Hub

Live Figure Drawing – Learning to Draw. This session is open to all skill levels. It provides an excellent introduction to drawing and a solid grounding for beginners as well as a time to practice drawing from the model. Expert tuition, paper, pencils, charcoal, easels and drawing boards will be provided. £40 for a four hour class – to book email [martinjessup66@gmail.com](mailto:martinjessup66@gmail.com).

## 18:30 SALSA & LATIN AMERICAN MUSIC

### Mi Cocina Es Tuya



A massive thank you to our accounts team who work for the festival pro bono, Andrew and Natalie at Price Accounts! They do a marvellous job and we couldn't do it without them. [www.priceaccounts.co.uk](http://www.priceaccounts.co.uk)

## STAGE 1

'A meeting point for a design for living and a design for performing'. On the stage of the Crystal Palace Bowl paintings of a domestic space reflect and interact with the surrounding environment.

# SATURDAY 17 JUNE 2017 — CRYSTAL PALACE PARK

Please note that as a FREE community festival, we need to take certain measures to help us give you the festival you deserve. While we have several bars on site, we do not allow alcohol to be brought on to site. Along with a very few other 'rules', including that no glass will be allowed at all (so tins or plastic bottles containing soft drinks only please!), please also be aware that we will be conducting bag searches on entry, and that ultimately, we do reserve the right to refuse admission.

## 11:00 FESTIVAL PARK SITE OPENS

## MAIN STAGE

### 11:30AM ONWARDS DJ MAMASUTRA — DAPHNEA

Expect to hear an eclectic mix of dance classics, pop, dancehall and the rest ... to keep you grooving in between acts.

### 11:30 — 12:00 HOLY MAN JONES

Holy Man Jones are Colbert Hamilton (Black Elvis) vocals and Paul Cunningham (Massive Attack) guitar, drums and harmonica. Their music was described by *Time Out* magazine as "Rock and Roll wrapped up in songs of passion and fire"

### 12:30 — 13:15 BARRY WOOLNOUGH AND ALAIN MCCLEAN (MOINE DUBH COLLECTIVE)

Music has been Barry's personal therapy that has pulled him through some difficult times. His deep, almost Johnny Cash-like voice has won the hearts of many. Alain's storytelling and unique style of guitar playing has been enchanting folk around the Palace for the past few years. Both feature on David Holmes' recent *Late Night Tales* compilation album and performed live at the launch in Belfast [www.facebook.com/Moine-Dubh](http://www.facebook.com/Moine-Dubh)

### 13:45 — 14:30 LAUREN DALRYMPLE

"A vibrant performer of lustrous textures and energy — imparts her own soul-jazz flavour and rich vibrato always pushing at the constraints of the pop-jazz techniques while holding the vibe!"  
John Fordham — *The Guardian*  
[www.laurendalrymple.com](http://www.laurendalrymple.com)

### 14:30 DJ SET BY LOL HAMMOND (DRUM CLUB / VERTIGO FILMS)

### 15:00 — 15:45 METAMONO

"Metamono show us a way back to the fun and the seriousness of electronic music. Their machine music kills fascism, or at least tickles it to death" David Stubbs [www.metamono.co.uk](http://www.metamono.co.uk)

### 16:15 — 17:00 SIAN EVANS AND RON MCELROY

This is the beginning of a new chapter for Sian Evans and long-term writing partner Ron McElroy. Mixing new work with their substantial back catalogue (including Kosheen and DJ Fresh), they make a compelling and dramatic live partnership [www.sian-evans-ron-mcelroy.com](http://www.sian-evans-ron-mcelroy.com)

### 17:00 — 17:25 GROUNDED MOVEMENT AND GROUNDED UK'S SWING AND JAM FEST

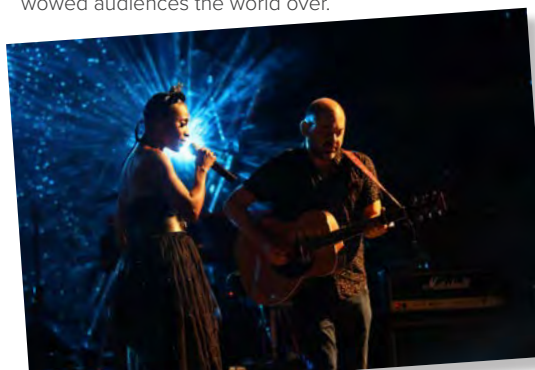
Temujin Gill and Sunanda Biswas, alongside top hip hop artist DJ Snuff, create some seriously infectious jazz, funk and hip hop grooves, inviting everyone to join in a fun and celebratory mass movement (aka party time)  
[www.groundedmovement.com](http://www.groundedmovement.com)

### 17:30 — 18:15 DELGRES

Pascal Danae, Rafgee and Baptiste Brondy's musicality help to bridge the missing link of the blues from Guadeloupe to Louisiana...to the Mississippi Delta. Their music revisits the blended songs and dances of the long-lost souls of New Orleans [www.delgresmusic.com](http://www.delgresmusic.com)

### 18:45 — 20:00 MORCHEEBA

Morcheeba formed in 1995 and produced a string of multi-million selling classic albums such as *Big Calm* and *Charango*. The sweet, fluid vocals of Skye blends with the laid-back mix of psychedelic rock, funk, and blues of Ross Godfrey's guitar work. Their concerts are spectacular and have wowed audiences the world over.



## YOUTH TAKEOVER STAGE

IN ASSOCIATION WITH



### 12:00 – 12:30 SONIC UPRISING TALENT COMPETITION WINNERS

We have been running a talent competition with help from the BRIT School students and their teachers. The winners will be revealed online and in the park guide.

### 13:15 – 13:45 SONIC UPRISING TALENT COMPETITION WINNERS

All details to be revealed online and in the park guide.

### 14:30 GROOVESCHOOL

**GROOVE SCHOOL** Young DJs from Grooveschool will play on the Youth Stage this year for the first time. A not for profit organisation that run projects focused towards nurturing young people's engagement, creativity and invention. The main activity they provide is DJ and Music Technology workshops for all ages and abilities. The performance will be closely followed by a short workshop in the Family Zone. [www.grooveschool.org](http://www.grooveschool.org)

### 15:45 – 16:15 GROUNDED MOVEMENT AND GROUNDED UK'S SWING AND JAM FEST

Grounded Movement and Grounded UK perform a vibrant piece bringing together hip hop and jazz dance cultures, followed by a short breakin' (break-dance) class and dance jam led by Sunanda Biswas. All welcome to come and throw-down (dance) [www.groundedmovement.com](http://www.groundedmovement.com)



### 17:00 BAC BEAT ACADEMY

The BAC Beatbox Academy, as featured on the BBC's Gareth Malone show, Latitude festival, and Royal Festival Hall, make their first appearance at the festival. Making music all from their mouths and open to all skill levels [www.bac.org.uk/beatboxacademy](http://www.bac.org.uk/beatboxacademy)

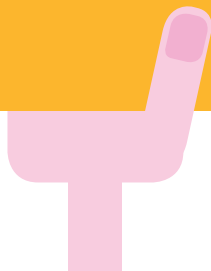
### 18:15 – 18:45 KIANJA AND BAND

Kianja is an up and coming artist who has been singing, songwriting and self-producing since the age of 14. Her music is feeling-filled and fresh. 'Kianja' means sunshine in Swahili and she aims to spread love and light through music  
Soundcloud, Twitter & Instagram @kianjamusic



### FIRST AID AND CHILDREN'S WELFARE

We take your safety very seriously indeed and we will have first aiders onsite situated at the HQ point. We are also handing out wristbands for children which you can write your mobile number on so you can be reunited easily!





## SPOKEN WORD & COMEDY MASH UP TENT

### 12:00 – 12:30 SPOKEN WORD UP AND COMING SESSION

Curated and MC'd by Joe Duggan, who you will see more of later, our up and coming session will feature quick fire performances from the best spoken word talent we can find!

### 13:15 – 13:45 MARY FINNIGAN

*Psychedelic Suburbia* – David Bowie and the Beckenham Arts Lab by journalist and broadcaster Mary Finnigan presents an entirely new insight into the period in 1969 when Bowie lived, worked and played with the author. Mary will be delving into her stories and memories of our south London hero.



### 14:30 – 15:00 COMEDY UP AND COMING SESSION

Fresh from her New Zealand sellout tour! Charmian is a class above most stand-up comedians – original and innovative, witty, erudite, funny yet profound – a great entertainer not to be missed. Don't miss Charmian and her choices for the up and coming slot.

### 15:45 – 16:15 IDLE EYE & JOE DUGGAN

Idle Eye (Douglas John Thorp) will read a few posts from his unsuccessful art book, *Amateur of Life and Death*, which, in his words “serves as a template for young people to better themselves in their own life endeavours”. “Lyrical, haunting and witty” *The Irish Times*, Joe Duggan is a local poet who has performed widely in London and was highly commended in the Forward Prize for his collection *Fizzbombs*.

### 17:00 – 17:30 MAX PORTER & GUESTS – A NONSENSE CABARET

Bring yer jabberwockies and yer hungry ear sockies to the Crystal Palace Nonsense Cabaret. Featuring local authors, poets, children, odd-jobs and mythical beasts. Hosted by Max Porter.

### 18:15 – 18:45 LEMN SISSAY

We are mega excited to host Lemn Sissay MBE as the headliner for our first spoken word and comedy tent. Lemn is the author of several books of poetry alongside articles, records, public art, and plays. He was the official poet for the London Olympics and his poems are installed throughout Manchester and London. [www.lemnississay.com](http://www.lemnississay.com)



# SATURDAY 17 JUNE 2017 — CRYSTAL PALACE PARK

## UNITED NATIONS BOARD OF SIGNIFICANT INSPIRATION

We've unearthed an Ooze of Muse in Crystal Palace Park! We need your help to harness the inspirational power of Water. Using the Eureka Machine you'll learn to infuse the Muse and become an UNBOSI Muse Catcher. Take the inspiration and spread it wherever you go. Keep your eyes peeled for the Eureka Machine – it will be somewhere between the food court and the main stage!

## VISUAL ARTS AND CRAFTS TENT

### 11:00 – 12:30 SPLATTERMAKE



Start the day by making and creating your unique festival fashion headband. We supply all the materials and guidance that will get you in the mood for fun. All ages! [splattermake.co.uk](http://splattermake.co.uk)

### 13:00 – 14:00 MAGICAL CASTLE WORKSHOP



Calling all Kings and Queens, Princes and Princesses! Join Dreamcatcher for a super special Magical Castle children's workshop using our favourite arts and crafts. Suitable for ages 2 – 7 [www.dreamcatcherparties.co.uk](http://www.dreamcatcherparties.co.uk)

### 14:30 – 15:15 KIDS' CLAY WORKSHOP



At this workshop kids can get their hands on the clay, have fun and be creative – we make a step-by-step project to take home using air-hardening clay! [www.kidsclayworkshop.com](http://www.kidsclayworkshop.com)

### 15:30 – 16:30 FRAMING FACTORY



Framing and Art Studio

Decorating a miniature frame with Posca pens and craft materials. Suitable for ages 5+. [framesandart.co.uk](http://framesandart.co.uk)

### 16:45 – 17:30 INKHEADS



In our workshop we'll create characters together (drawn by our illustrator). YOU can plot your own story to write with our expert advice. For writers aged 8 – 12 [inkhead.co.uk](http://inkhead.co.uk)

### 17:45 – 18:45 CURIOUS CYANOTYPES

**Untapped** Create a beautiful deep-blue photograph using found and scavenged objects and the sun! Inspired by science and nature, learn how this traditional process combines magic and art. Suitable for ages 3+. [www.untapped.org.uk](http://www.untapped.org.uk)

### 12:00 – 18:00 THE LABYRINTH OF LOST STORIES

[Crystal Palace Park Maze](#)



Things are stirring in Crystal Palace Park. Voices have been heard echoing around the maze... whispers from another world and another time. Passers-by have noticed shadows, as if people are wandering around the maze seeking out answers to long forgotten questions. Are you brave enough to enter? If you are, maybe you can discover who these mystical characters are and piece together stories from the past to discover hidden treasures in the maze? Work together with your friends and family to follow the clues and unravel the mysteries of the maze on this free storytelling adventure! Suitable for ages 6-12.

Directed and produced by

**FANTASY HIGH  
STREET**  
ARTS EVENTS

# SATURDAY 17 JUNE 2017 — CRYSTAL PALACE PARK

## PERFORMANCE AND WORKSHOP TENT — FAMILY ZONE

### 11:00 — 11:50 PARTICIPATORY SINGING SESSION WITH KATIE ROSE AND CRYSTAL PALACE TRANSITION TOWN CHOIR



Put a sing in your step to start your festival day — all voices and ages welcome [www.therosewindow.org](http://www.therosewindow.org)

### 12:00 — 12:30 GROUNDED MOVEMENT AND GROUNDED UK'S SWING AND JAM FEST

Grounded Movement perform some rug-cutting lindy hop and jazz, followed by an informal taster class in jazz and funk social dances. This will culminate in a mass Big Apple dance (ceilidh-like circle dance from the golden jazz era). Suitable for ages 5+

### 13:15 — 14:15 FRENCH FRANCK SCHOOL OF ALL MUSIC (FFSAM)



French Franck presents the little rock 'n' roll gems he has been teaching drumming, singing and playing guitar to, followed by a music workshop for all to join in. Suitable for all ages

[albafranck@gmail.com](mailto:albafranck@gmail.com)

### 14:30 — 15:00 THE LITTLE DISCO COMPANY



A fun and interactive disco for the whole family to enjoy — top tunes, kids' favourites, games, bubbles, snow and fireworks! Suitable for all ages.

### 15:10 — 15:40 GROOVESCHOOL DJ WORKSHOP



Grooveschool runs projects that encourage children and young people to get involved

in music. Come along to one of its workshops to learn new skills in DJing and music technology. Suitable for ages 10 — 19.

### 15:50 — 16:10 APSARA ARTS PERFORMANCE



Apsara Arts runs regular dance classes in Bollywood and Kathak for all ages. Their students

regularly perform [www.apsaraarts.co.uk](http://www.apsaraarts.co.uk)

### 16:20 — 16:50 BEAUTIFUL BIRDHOUSES WORKSHOP

#### Untapped

Make your very own unique birdhouse using recycled

materials, all ready with birdseed to take away to feed your feathered friends! Bird spotting information included. Suitable for children ages 3+ [www.untapped.org.uk](http://www.untapped.org.uk)

### 17:00 — 18:00 EXPLORE THE JUNGLE — AN INTERACTIVE SHOW FOR KIDS



Explore the Jungle! Trek into the unknown with Dr Fattenborough and see the Giraffe, Zebra,

Tigers and Bear! Don't miss out on your chance! To meet the cheeky monkeys for a dance! Suitable for all ages. [www.](http://www.simplysmileyproductions.co.uk)

[simplysmileyproductions.co.uk](http://www.simplysmileyproductions.co.uk)



### 18:15 — 18:45 EVENING YOGA WITH PROJECT YOGI

Wind down with yoga for all ages with Project Yogi, a not-for-profit organisation that creates self-development and self-empowerment programmes using yoga, mindfulness and social emotional learning activities. Suitable for all ages.

### MNEMONIC PARK, CRYSTAL PALACE — PARK OF MEMORY

The installation is a large-scale collaboration in Crystal Palace Park, demarcating the exact footprint of the Crystal Palace with replica columns. A series of walks will be led by local historians and activists. Visitors are invited to bring their own materials and tools to the workshops to help make the columns. As the scale of the Crystal Palace is immense only a third of its footprint will be erected and as the installation is temporary, it will be returned to parkland after the event. More information on the News section of our website at [crystalpalacefestival.org](http://crystalpalacefestival.org). Register at [www.eventbrite.co.uk/e/mnemonic-park-crystal-palace-park-of-memory-tickets-34035056771](http://www.eventbrite.co.uk/e/mnemonic-park-crystal-palace-park-of-memory-tickets-34035056771)

LONDON FESTIVAL OF  
ARCHITECTURE



GIPSY HILL STATION

# THE TRIANGLE

Crystal Palace Park Event - head for the MAZE!

Please note at time of going to press, we cannot publicise our park event map and location due to pending sign off by the relevant authorities. Maps will be available online and at the park event on 17 Ju



**Sponsors and Supporters of the festival**

- |  |                                       |  |
|--|---------------------------------------|--|
| <b>1</b> Amphlett Lissimore              | <b>20</b> Smash Bang Wallop           | <b>38</b> The Paxton Centre              |
| <b>2</b> The White Hart                  | <b>21</b> Domali                      | <b>39</b> BOB Wines                      |
| <b>3</b> Barnardos                       | <b>22</b> The Sparrowhawk             | <b>40</b> St Hugh's Community Centre     |
| <b>4</b> The Secret Garden               | <b>23</b> Blue Door Bicycles          | <b>41</b> Anerley Town Hall              |
| <b>5</b> Sainsbury's                     | <b>24</b> Christchurch Gypsy Hill     | <b>42</b> D'Solo                         |
| <b>6</b> Mi Cocina es Tuya – Café Latino | <b>25</b> Gypsy Hill Tavern           | <b>43</b> Bambino                        |
| <b>7</b> Blackbird Bakery                | <b>26</b> Willie Smarts               | <b>44</b> Words & Pictures               |
| <b>8</b> Bamboo Fitness                  | <b>27</b> Sefgrove Chemist            | <b>45</b> Just Giclee                    |
| <b>9</b> Papagaio                        | <b>28</b> Coopers Yard Studios        | <b>46</b> Martin & Co                    |
| <b>10</b> Salvation Army Hall            | <b>29</b> Allbone & Trimit            | <b>47</b> Comfort & Joy                  |
| <b>11</b> South of the River             | <b>30</b> Methodist Church            | <b>48</b> Brown and Green                |
| <b>12</b> The Bookseller Crow            | <b>31</b> Upper Norwood Library Hub   | <b>49</b> Yak & Yeti                     |
| <b>13</b> Acorn                          | <b>32</b> The Royal Albert            | <b>50</b> Lihn Son Buddhist Temple       |
| <b>14</b> Living Water Satisfies         | <b>33</b> Westow House                | <b>51</b> St. John the Evangelist Church |
| <b>15</b> Marty's Open Art Studio        | <b>34</b> Crystal Palace Museum       | <b>52</b> Lakes Café                     |
| <b>16</b> Haynes Lane Market             | <b>35</b> ACHE Garden                 |  |
| <b>17</b> Crystal Palace Food Market     | <b>36</b> Crystal Palace Physio Group |  |
| <b>18</b> Antenna Studios                | <b>37</b> GLL / Better                |  |
| <b>19</b> Merlin Shoes                   |                                       |  |



## STORYTELLING TENT — FAMILY ZONE

### 11:00 — 11:30 SHORT STORIES WITH JULIE

### 12:00 — 12:30 STORYTELLING WITH SOUNDSCAPE

*Twice Shy Theatre*  
In a world filled with darkness, Twice Shy Theatre delve into the shadows in search of light. Improvised storytelling with sublime live music. From 9 to 90.

### 13:15 — 13:45 JO CLAYTON SOUTH LONDON FAIRY TALES

Traditional tales transplanted to South London for young and old alike. From 9 to 90.

### 14:30 — 15:00 STORYTELLING WITH SOUNDSCAPE

*Twice Shy Theatre*  
In a world filled with darkness, Twice Shy Theatre delve into the shadows in search of light. Improvised storytelling with sublime live music. From 9 to 90.

### 15:45 — 16:15 LOCATIVE LITERATURE

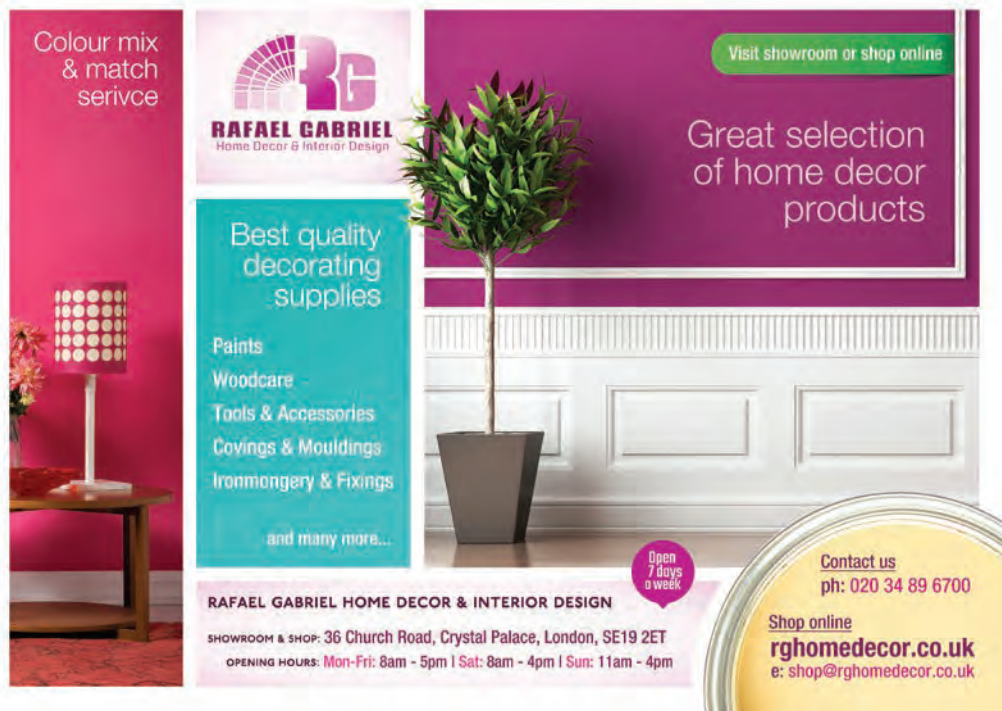
What does it feel like to 'walk inside' a story? Or to write a tale which takes others around real places? Find out with Story Places at Crystal Palace Park. Suitable for age 11+

### 17:00 — 17:30 RECONQUISTA — JJ ANDERSON

Adventure, intrigue and self-discovery in 13th century Al Andalus. Storytelling for adults and children 11+

### 18:15 — 18:45 BECKENHAM STORYTELLERS

Storytelling for adults and children 11+. You are welcome to come and listen or tell a story if you wish. Beckenham Storytelling Circle meets on the fourth Wednesday of every month at the Goldsmiths Arms, Penge.



Colour mix & match service

**RAFAEL GABRIEL**  
Home Decor & Interior Design

Visit showroom or shop online

Great selection of home decor products

Best quality decorating supplies

- Paints
- Woodcare
- Tools & Accessories
- Covings & Mouldings
- Ironmongery & Fixings

and many more...

Open 7 days a week

**RAFAEL GABRIEL HOME DECOR & INTERIOR DESIGN**

SHOWROOM & SHOP: 36 Church Road, Crystal Palace, London, SE19 2ET  
OPENING HOURS: Mon-Fri: 8am - 5pm | Sat: 8am - 4pm | Sun: 11am - 4pm

Contact us  
ph: 020 34 89 6700

Shop online  
**rghomedecor.co.uk**  
e: shop@rghomedecor.co.uk

## COMMUNITY ZONE

### CO-SPONSORS



Just some of the activities you will be able to browse in this zone – you will be able meet many of the community groups, charities and businesses from the local area. A fantastic way to find out what's going in the lively community of Crystal Palace!

### CRYSTAL PALACE PARK COMMUNITY GROUPS

Martin & Co as co-sponsors of the community zone are delighted to bring to the festival a walking and roaring T-Rex. Come and join us and Friends of Crystal Palace Dinosaurs and Friends of Crystal Palace Park for fun, frolics and a bit of learning too. We will be holding exciting shows and workshops throughout the day about dinosaurs and ducks. Come and see us to learn about ducks and dinosaurs with our very special guest Dexter. Join us for a roaring good time. We can't wait to see you.

### CRYSTAL PALACE TRANSITION TOWN

Crystal Palace Transition Town turns six this year and we have an amazing range of exciting community-led and sustainable projects under our belt – including the multi-prize winning Crystal Palace Food Market, Palace Pint, Patchwork Farm, Palace Buds, Green Drinks, Community Meals and Clean-ups plus a very exciting partnership with The Paxton Centre on Anerley Hill. New projects in the pipeline include a Library of Things (With Upper Norwood Library Hub), an Energy Garden at Crystal Palace Station, and a "great switch" to clean energy providers! Come along to our stall to find out more and see how you can get involved. Come away with real seeds and with the seeds of new ideas! [www.crystalpalacetransition.org.uk](http://www.crystalpalacetransition.org.uk)



Authentic Sardinian cuisine, genuine Italian atmosphere  
Home delivery and function room available

Tel: 020 8771 7327

Web: [www.mediterranea.co](http://www.mediterranea.co)

21 Westow Street, SE19 3RY

## WELL-BEING AND ACTIVE ZONES

### WELL-BEING ZONE

Take a timeout in our Well-Being Zone with the opportunity to learn about how to enhance your health from our expert providers including Training Points, Crystal Palace Physiotherapy and more.

### WELL-BEING TENT

Sponsored by



\*All seminars and classes are delivered by Healthcare and Fitness Professionals from Crystal Palace Physio Group

#### 12:00 – 12:30 BENEFITS OF EXERCISE

Exercise is a powerful tool to ward off disease, disability and stress. Find out how you could use exercise to improve your health and wellbeing.

#### 13:00 – 13:30 INTRODUCTION TO PILATES

Pilates is a low impact and low risk form of exercise than can yield a number of health benefits. Join us for this beginners introduction to Pilates exercise class. All you will need is loose fitting clothes and a willingness to participate!

#### 14:00 – 14:30 DIET AND NUTRITION TIPS

Poor diet and nutrition is one of the leading causes of common health conditions. Learn how you can harness the power of a good diet to improve your health and reduce the risk of problems in the future.

#### 15:00 – 15:30 INTRODUCTION TO YOGA

Yoga is an ancient form of exercise that includes controlled breathing, simple meditation, and the adoption of specific bodily postures. Join us for this beginners' class to see how it can help you relax and improve your health. Loose fitting clothing required.

#### 16:00 – 16:30 WHAT YOU NEED TO KNOW ABOUT BACK PAIN

Back pain is very common and affects 4 out of 5 adults at some time in their lives. Join us for this informative seminar on how to reduce your risk of back pain and how to manage if you are affected by it.

#### 17:00 – 17:30 BACK FITNESS CLASS

Exercise is one of the key tools used to fight back pain. Come and join us for this exercise class to learn a basic group of exercises that may be helpful in improving the mobility of the lower back and your general fitness. Loose fitting clothing required.

### ACTIVE ZONE

Sponsored by **BETTER**  
the feel good place

Find out what's happening at the National Sports Centre this summer and beyond with our Active Zone sponsors **GLL / Better** who are bringing the sports centre to the festival site! You can learn how to become a member and about various classes, activities and clubs. FREE taster sessions all day including:

**Tennis** – a pop up court located on tennis courts near the sports centre

**Basketball** – can you beat the one shot hoop challenge?

**Toddlers' Gymnastics**

**Athletics** – challenge yourself with the high step and speed bounce circuits

**Indoor Rowing** – are you able to be the fastest time at set distances?

**Junior Fitness activities**

**Soft Play** equipment for the under 5's

#### Palace for Life Foundation



With a vision of helping young South Londoners grow through sport, the Palace for Life Foundation together with CPFC comes to the festival with their fastest shot machine, a range of fun footballing activities and lots of surprises for local children and young people.

## ANIMAL ZONE

### 14:00 THINK PAWSITIVE DOG SHOW

Sponsored by  Paxton  
Veterinary Clinics Ltd

It's our very own inaugural dog show!! There are so many dogs and dog lovers in our community we felt it was time to have a show for them with a doggone good time for all (groan).

**Fees** £5 entry fee plus £2 for each additional category entered, payable on receipt of application. £1 of every entrance fee will go to support SNARL (South Norwood Animal Rescue and Liberty) our local rescue charity.

#### Categories

Best Puppy (must be at least 6 months old), Most Adorable Rescue, Golden Oldie (for any dog over 7 years old), Best Dressed, Best Trick, Dog Most Like It's Owner and People's Choice. Apply online at <https://cpfestival.typeform.com/to/r87qe3>



### Capel Manor College **PETTING ZOO**

We are London's leading land-based college – our

Crystal Palace Park Farm houses a variety of large, small and exotic animals. Come and see these animals, pet and feed them. Also find out more information about all our Animal Care, Arboriculture and Countryside, Garden Design and Horticulture courses.

## EATING AND DRINKING

Welcome to the food and drink heaven that is our festival park event! We have searched high and low for the best traders with the most amazing food and drinks to ensure that you get to try the highest quality from around the world. From oysters to gelato, from Vietnamese to Mexican food, from prosecco to cider, we simply haven't got the space to tell you about all of our food and drink offerings. Just wander around and see for yourself!



## SHOPPING

Like a bit of retail therapy? So do we! Make sure you bring a bit of extra cash as you will be totally tempted by our traders' lovely array of arts, crafts, clothing, shoes, jewellery, kids' toys, books and much, much more!

## VINTAGE UP THE PALACE

Celebrating one of Crystal Palace's many cultures, we bring you Vintage at the Festival. For lovers of fashion from 20's through to the 90's, we have a dedicated area of shopping for the vintage lovers amongst you. Don't miss your chance to snap up some bargains from our fabulous traders!





# SATURDAY 17 JUNE — TRIANGLE & BEYOND EVENING EVENTS

## 19:30 BROKEN BISCUITS

Antenna Studios

Broken Biscuits is a variety event, conceived by Crystal Palace-based writer/performer Douglas John Thorp (aka Idle Eye). It combines spoken word, music, comedy and film, and has toured extensively since its inception in April 2016. Featuring Idle Eye, Jenny Vegas, Jenny Lockyer and Elvis Parsley with Vivienne Westnorwood as compere and short animations from artist/sage Dan Laidler. Pay what you can on the door.

## 19:30 THOMAS TROTTER & LONDON MOZART PLAYERS

St John the Evangelist, Sylvan Road, SE19 2RX

London Mozart Players presents a collision of music styles and cultures in a special one-off show. Croydon Gospel Choir will perform Vivaldi's Gloria then join forces with Crystal Palace Community Choir & the choirs of the Harris Academies to perform Karl Jenkins' Adiemus, before the orchestra explodes into Poulenc's acclaimed Organ Concerto with one of the world's most admired organists, Thomas Trotter. Tickets £15 from [www.lmp.org](http://www.lmp.org)

## 20:00 LIVE MUSIC WITH MASSIVE DYNAMIC

The White Hart

Funk, Blues, Rock & Roll all sure to get you up dancing through the night!

## 19:00 – 23:00 GILL MANLY JAZZ TRIO

The Paxton Centre

Croydon resident, Gill Manly, a jewel in the crown of British jazz and blues, performs with her acoustic blues musicians, Trevor Hyett (mandolin mandola), and Thomas Coffey (acoustic guitar). She is a regular headliner at Ronnie Scott's, famously with her critically acclaimed show Portrait of Nina Simone. Tickets £7.50 on the door or in advance from [www.eventbrite.co.uk/e/festival-live-jazz-night-tickets-32858374282](http://www.eventbrite.co.uk/e/festival-live-jazz-night-tickets-32858374282)

## 21:00 TWO 5

The Sparrowhawk

## 21:30 THE BREW

Gipsy Hill Tavern

Celtic Rock and covers

## 22:00 – 01:00 LIVE MUSIC FROM THE CRACKED

Domali Bar & Kitchen

Afrobeat, Latin, calypso, ska and Balearic tunes. Michael Johnson and Sugar T will carry on the party on the decks.

# GIBSONS



Chartered Accountants and Business advisors  
who value long term relationships.

Web: [www.gibsonslip.com](http://www.gibsonslip.com)

Tel: 020 8916 1212

Over 30 years in practice

Over 20 years in Crystal Palace

Over 10 years in Westow Street

Email: [gibsons@gibsonslip.com](mailto:gibsons@gibsonslip.com)



## UNITED NATIONS BOARD OF SIGNIFICANT INSPIRATION

We will be installing apparatus and monitoring sites of inspiration discovered by the Norwood Society. Are you as inspired as the creative geniuses that were here before? Will you have a 'light bulb' moment or have you lost your marbles? The Muse Monitoring experiments will be at selected locations of significant inspiration around the famous Crystal Palace Triangle. Do you think you've got what it takes to make history? Come find us and find out.

### 10:00 – 13:00 SEEDBOMBING AND YARNBOMBING

**ACHE** garden, Crystal Palace Park (next to the gates off Anerley Hill)

Come and make your own seedbombs and join us in a spot of yarnbombing in the ACHE garden, the community peace garden initiated by Paxton Green Time Bank. Free activity with all equipment provided. Suitable for all ages. Refreshments available. Also find out about timebanking, where you can share skills locally and exchange time within your community.

### 10:30 – 12:00 BOOK AID CHARITABLE TRUST

**Rockmount Primary School, Chevening Road, SE19 3ST**

Book Aid Charitable Trust sends large shipments of new and second hand Christian Books and Bibles to needy countries mainly in Africa, Asia and the Caribbean. If you want to donate any good quality Christian books or Bibles we will have a collection point at this event.

### 11:00 – 16:00 CURATOR AND VOLUNTEER TALKS

**Crystal Palace Museum**

Discover your free local museum, where the museum's founding curator and expert volunteers will share their enthusiasm for the Victorian wonder that was the Crystal Palace with you.

### 12:00 SALVATION ARMY BAND

**Westow Street outside Sainsbury's**

The Salvation Army Band and Churches Together gather for a big sing, open to all.

### 12:00 TIL LATE

**Westow House**

Pitch up at our pop-up bar and enjoy a daily hog-roast, all in the vast Westow House gardens.

### 12:00 – 12:45 LITTLE RED RIDING HOOD

**St John the Evangelist, Sylvan Road, SE19 2RX**



Join Croydon's resident orchestra this half term as we re-imagine

Roald Dahl's iconic interpretation of the children's classic Little Red

Riding Hood, brought to life with live music by Paul Patterson, narrated by Rebecca Kenny & performed by London Mozart Players. Suitable for children of all ages. **Tickets from [www.lmp.org](http://www.lmp.org)**

### 12:00 – 20:00 DJS ALL DAY

**Antenna Studios**

Chilled and uptempo funk, disco, house, dub, and everything in between. Food stalls courtesy of the Crystal Palace Food Market, nice beers, Bloody Marys and more.

### 13:00 – 14:30 VOCAL CHORDS

**The Secret Garden**

Vocal Chords performs a diverse repertoire of non-classical music and the choir has performed at many events from street corners and cemeteries to museums and concert halls, including the South Bank Centre. They will perform songs of protest and change.

### 13:00 – 15:00 HARRIET EAVES MUSIC JAZZ SINGER

**The Paxton Centre**

We welcome back Harriet Eaves Music with her vintage jazz tunes to continue our festival celebrations. Join us for some lovely Sunday afternoon laid back live music at our beautiful vibrant arts space opposite Crystal Palace train station. Tickets £7.50 on the door or in advance from the centre. **[www.eventbrite.co.uk/e/festival-jazz-sunday-special-tickets-32856205796](http://www.eventbrite.co.uk/e/festival-jazz-sunday-special-tickets-32856205796)**

## 13:45 – 14:15 OPERA IN THE GARDEN

### The Secret Garden

Jane Harrington (soprano) and Eve Lambach (mezzo soprano) will perform a programme of well-loved operatic duets and solos including works by Mozart, Monteverdi and Delibes.

## 14:00 TWO 5, SIAN EVANS AND RON MCELROY AND RESIDENT ARTIST FRANK LASZIO

### Bambino

Later in the evening – come and chill out at Bambino for an evening of poetic songs from *Lady Soul Armored*. Where the pop song and the lyric ballad have one more for the road, talking in mellow tones about the years of wax and the centuries of verse. The Children will see you there. See @andybambino for details

## 15:00 FRENCH FRANCK SCHOOL OF ALL MUSIC (FFSAM)

### Brown & Green

French Franck presents the little rock 'n' roll gems he has been teaching drumming, singing and playing guitar to.

## 16:00 WALK INTO THE PAST AROUND THE TRIANGLE

### Meet outside Crystal Palace Station

The Norwood Society hosts a walk exploring the history of the buildings and shops, some of which are displaying plaques showing past trades or traders. Free but donations welcome.

## 16:00 – 16:30 SHEKU KANNEH-MASON

### St John the Evangelist, Sylvan Road, SE19 2RX



BBC Young Musician 2016 Sheku Kanneh-Mason joins Croydon's own orchestra London Mozart Players for a special one-off show,

as he performs Haydn's Cello Concerto in C. The first black musician to win the BBC accolade, Sheku is one of the UK's exciting new classical talents. In this special collaboration, the ensemble will be joined by musicians from the local education hub Croydon Music & Arts to perform Shostakovich's Chamber Symphony, followed by a performance of Mozart's Haffner symphony. Tickets £15 from [www.lmp.org](http://www.lmp.org)

## 18:00 – 19:00 MEDITATION CLASS FOR ADULTS

### Lihn Son Buddhist Temple, 76 Beulah Hill, SE19 3EW

Come and learn the ancient art of Buddhist meditation. Take a break from your busy life of doing and learn to just be in the present moment. Free and no need to book, just drop in – all are welcome.

## 18:00 – 19:00 CRYSTAL PALACE YOUTH ORCHESTRA

### Salvation Army Hall

The Crystal Palace Youth Orchestra was formed three years ago by a local music teacher and violinist Miss Agatha Lisowska. CPYO children take regular exams with the ABRSM and will perform as soloists for this concert to demonstrate their musical talents. [www.CPYO.co.uk](http://www.CPYO.co.uk)

## 19:15 SERGEI PODOBEDOV

### Salvation Army Hall

Award-winning pianist and graduate of the Moscow Central School of Music, the Tchaikovsky Conservatory and the Royal College of Music, returns to the festival to play Mozart, Chopin and more [www.sergeipodobedov.com](http://www.sergeipodobedov.com)

## 19:30 AN EVENING OF OPERA

### Domali Bar & Kitchen

Jane Harrington Soprano, Nicholas Mulroy Tenor and Annie Gill Mezzo Soprano



Jane Harrington